

West Midlands Ofsted Big Conversation

Lorna Fitzjohn
West Midlands Regional Director

 @LFitzjohnOfsted

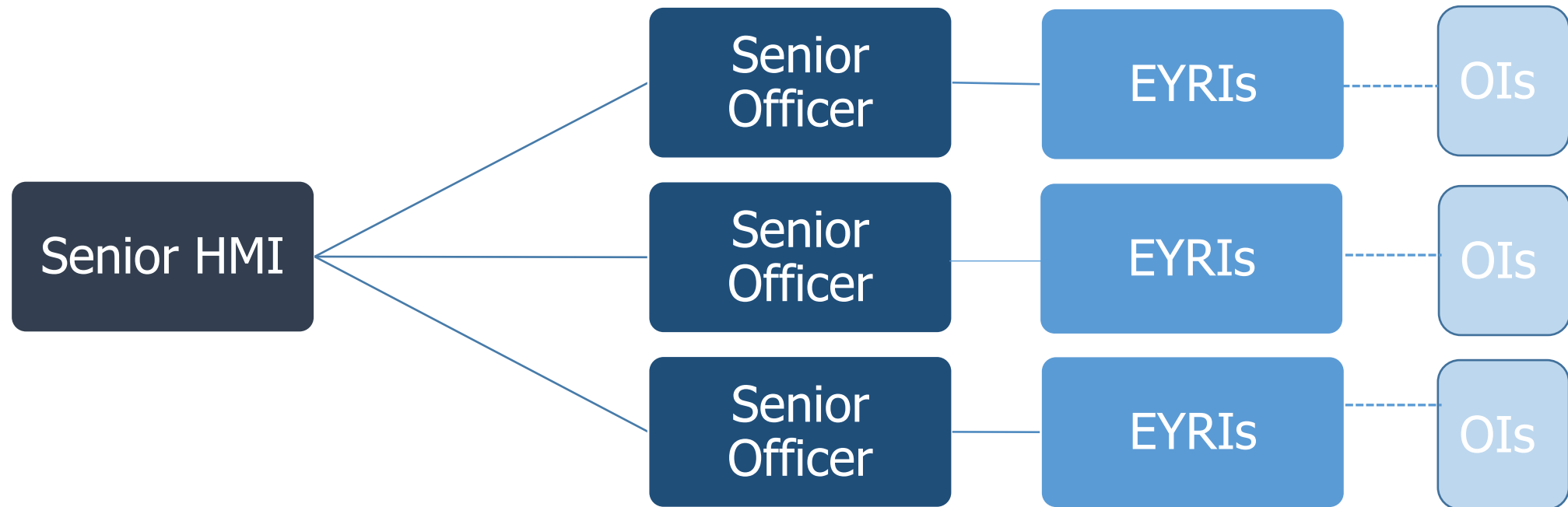
5 October 2018



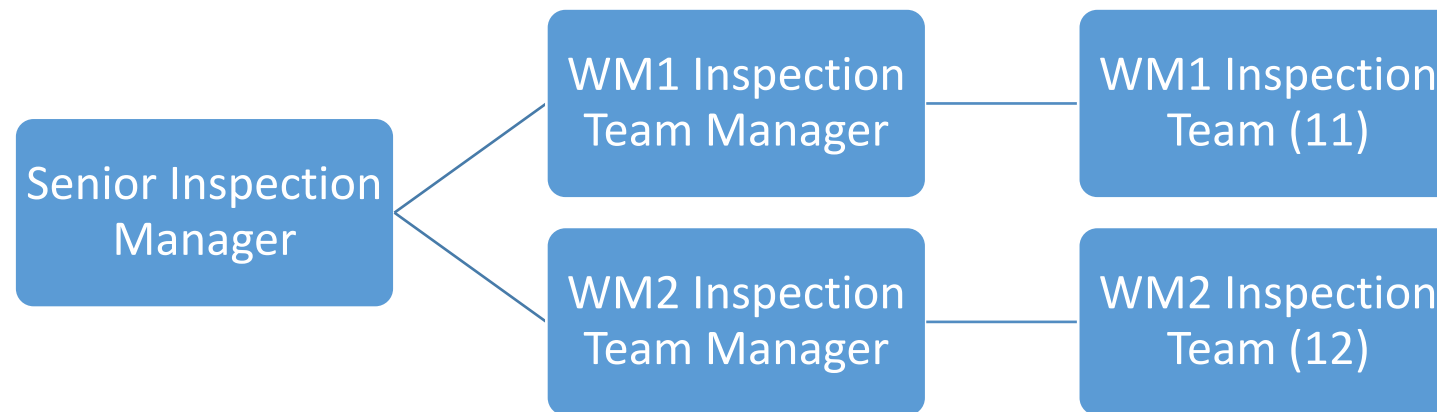
Where are we now....?

- Three months until full regionalisation
- EIF – the curriculum and quality of education
- Early years pedagogy and practice forum
- Continued focus on making improvements through inspection
- Changes to notification process

Future West Midlands Team



EYDU West Midlands Team



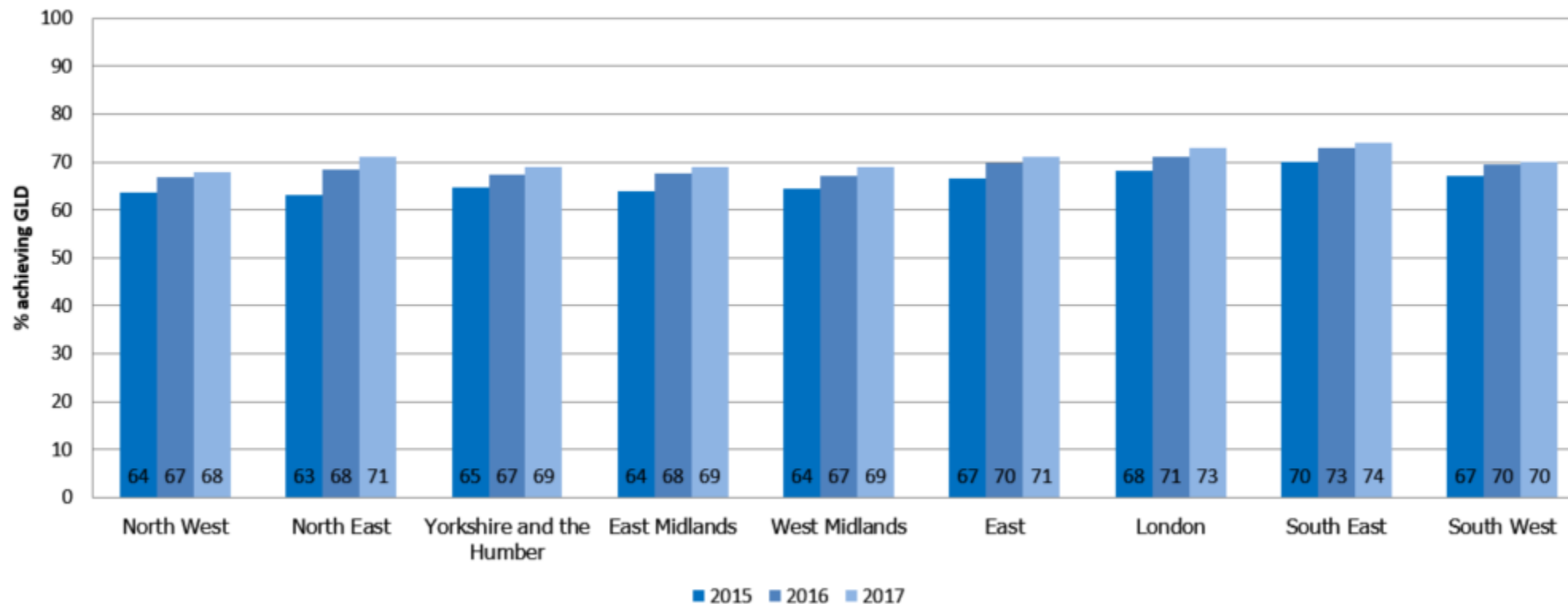
- The current inspection cycle runs from 1 August 2016 to 31 July 2020.
- At 31 August 2018 we were 25 months into the current inspection cycle. This is 52% of the way through.
- At this stage in the West Midlands, 54% of cycle inspections were complete.

Current EYDU priorities

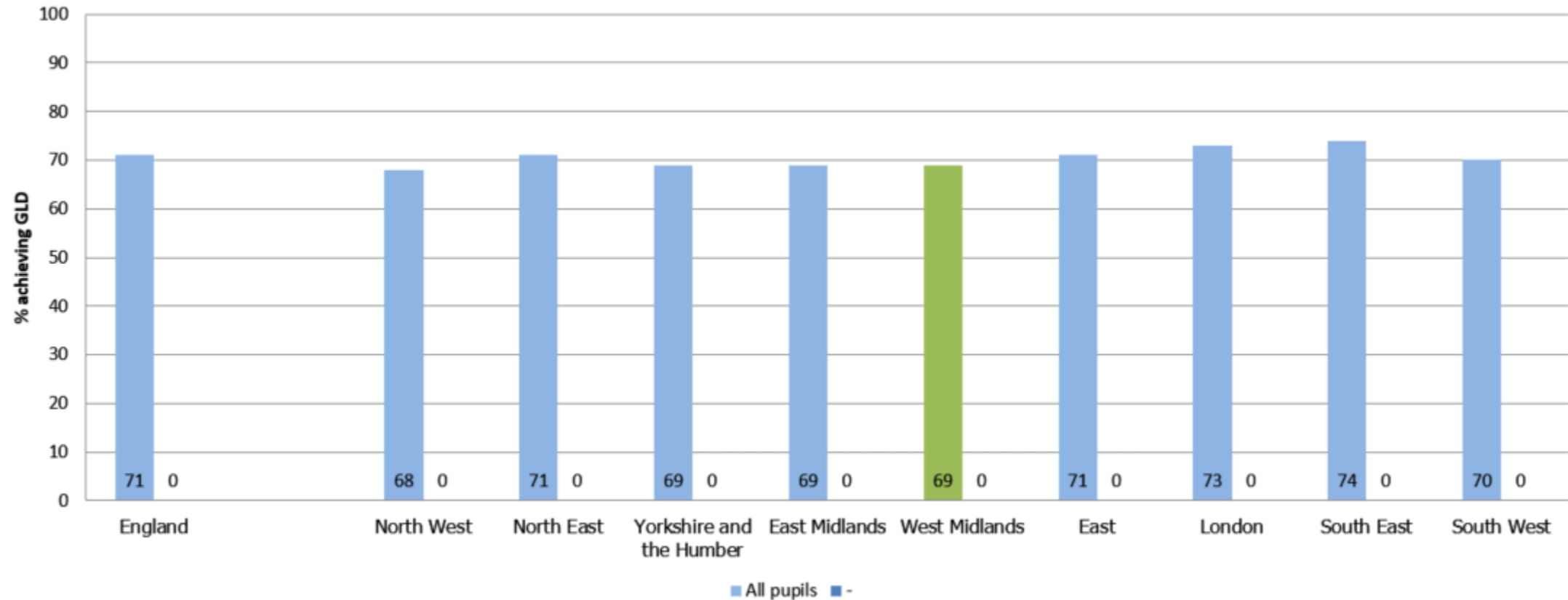
- Preparing for regionalisation.
- Working in partnership with regional colleagues.
- Carrying out inspections in line with the current inspection cycle, post registration inspections and re-inspections.
- Prioritising inspections when information is received that causes concern.
- Training and mentoring six Ofsted inspectors joining the West Midlands team.

% of children achieving a good level of development

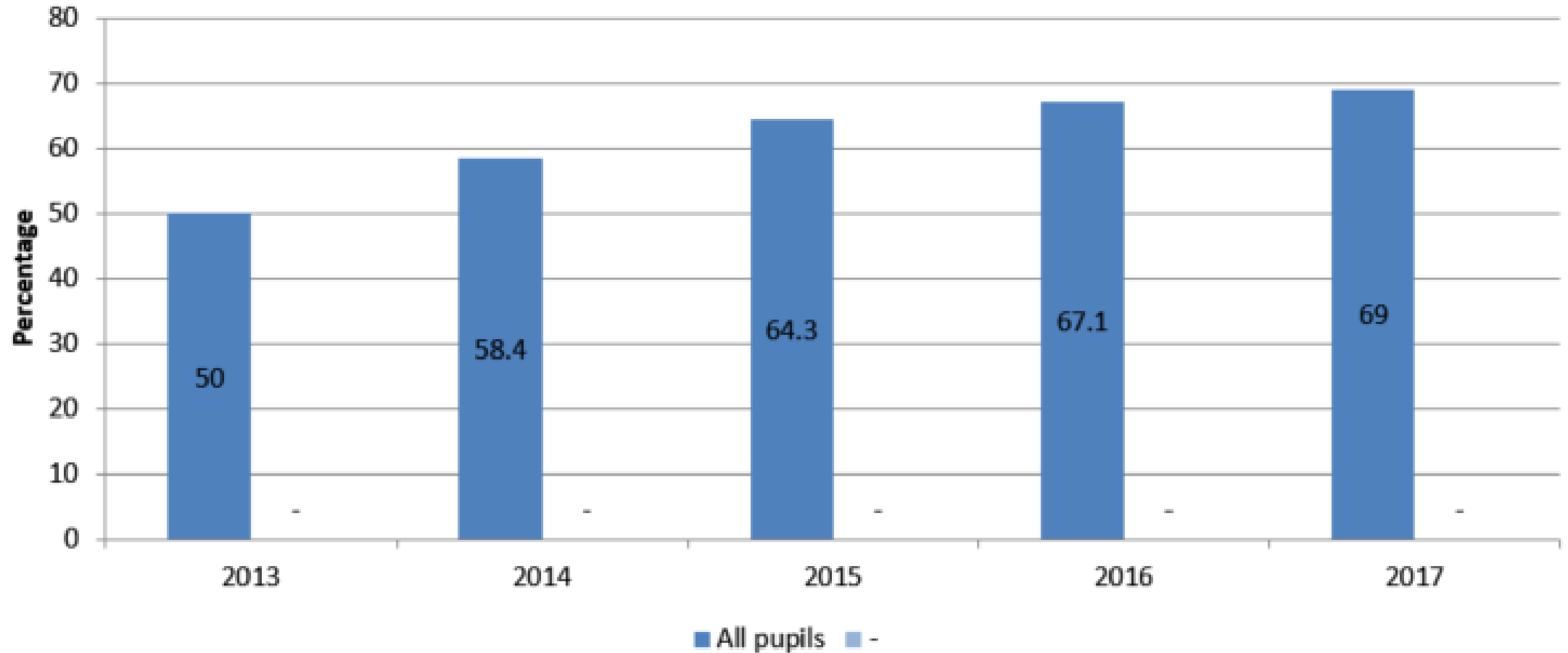
Percentage of children achieving a good level of development by region



% of children achieving a good level of development (2017)



% achieving good level of development in West Midlands from 2013 to 2017



Early Years Foundation Stage

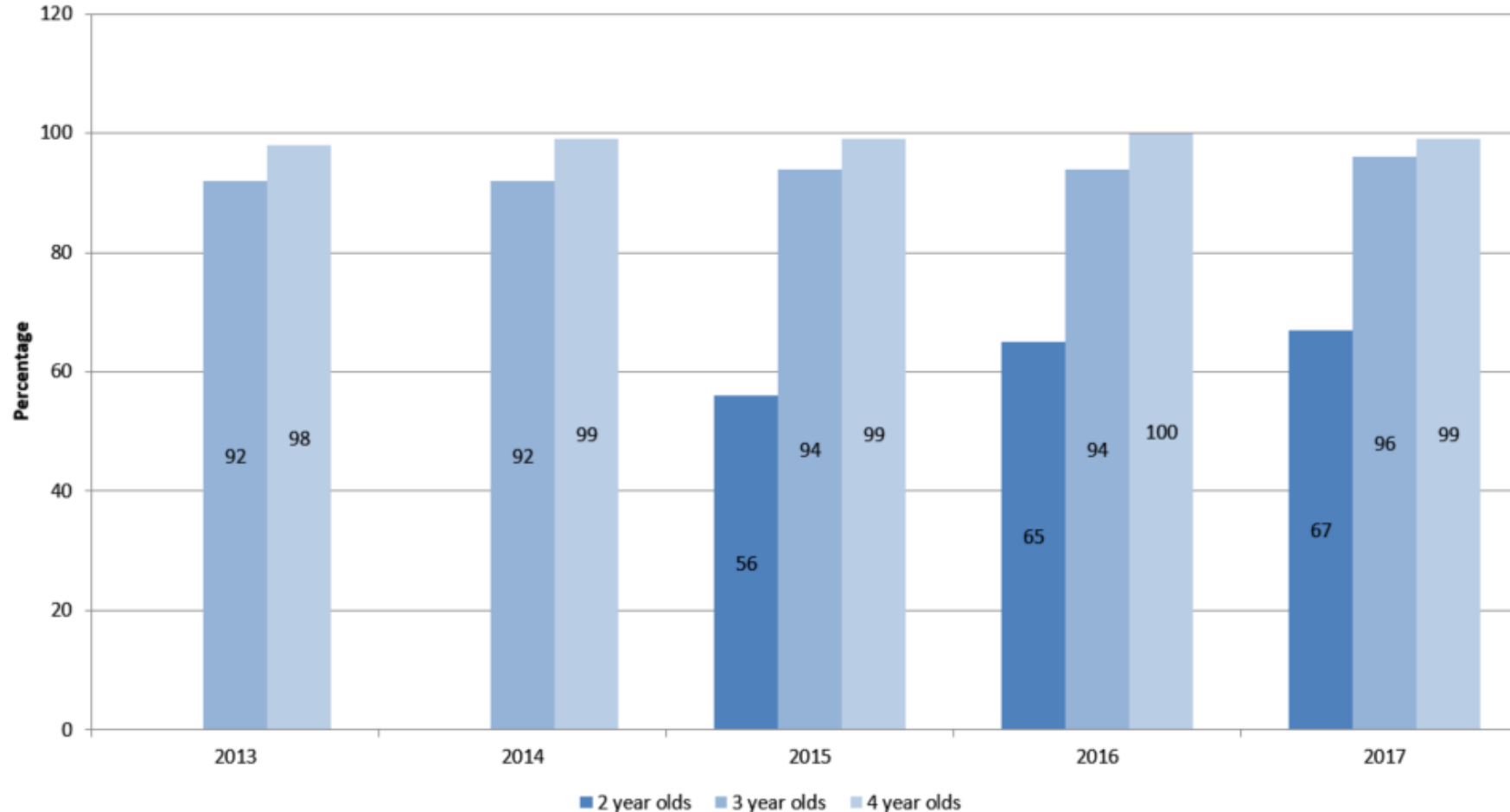
Local authority	Good level of development (%)		Number of EYR providers
	2017	Year on yr change	
England	71	1	64,398
West Midlands	69	2	5,360
Birmingham	66	2	972
Coventry	66	1	389
Dudley	65	1	221
Herefordshire	75	3	170
Sandwell	64	3	250
Shropshire	71	2	290
Solihull	72	0	259
Staffordshire	75	1	865
Stoke-on-Trent	66	1	167
Telford and Wrekin	70	1	179
Walsall	66	1	157
Warwickshire	73	2	640
Wolverhampton	66	3	169
Worcestershire	70	1	632

Inspection outcomes

Local authority	Inspection outcomes*		
	Proportion good or outstanding as at 31 Mar 2018 (%)	%pt change in good or outstanding since Aug 2016	%pt change in good or outstanding since Aug 2017
England	94	3	1
West Midlands	94	3	1
Birmingham	91	3	1
Coventry	94	6	0
Dudley	97	6	3
Herefordshire	93	0	0
Sandwell	92	8	0
Shropshire	97	2	2
Solihull	95	4	0
Staffordshire	96	3	0
Stoke-on-Trent	95	7	0
Telford and Wrekin	97	6	3
Walsall	92	-1	2
Warwickshire	96	4	2
Wolverhampton	84	4	-3
Worcestershire	94	0	-1

*Percentage good or outstanding relates to inspected EYR providers only

Take up rate of funded places in West Midlands from 2013 to 2017



Ofsted on the web and on social media



www.gov.uk/ofsted

<https://reports.ofsted.gov.uk>

 www.linkedin.com/company/ofsted

 www.youtube.com/ofstednews

 www.slideshare.net/ofstednews

 www.twitter.com/ofstednews

